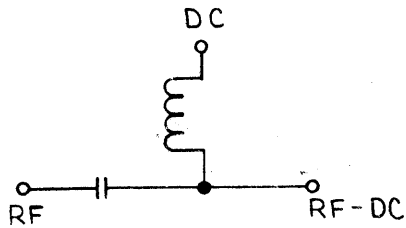
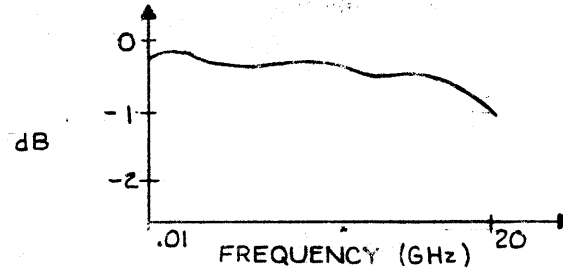


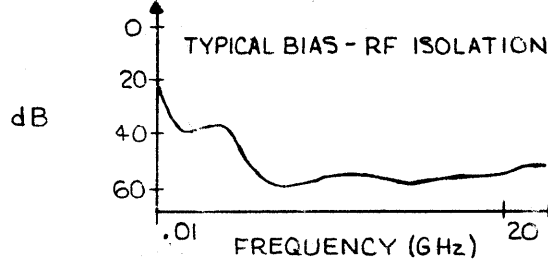
FUNCTIONAL SCHEMATIC



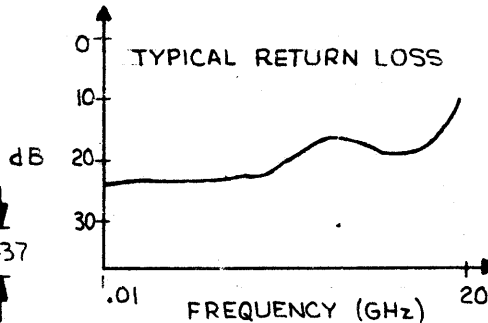
TYPICAL INSERTION LOSS



TYPICAL BIAS - RF ISOLATION



TYPICAL RETURN LOSS

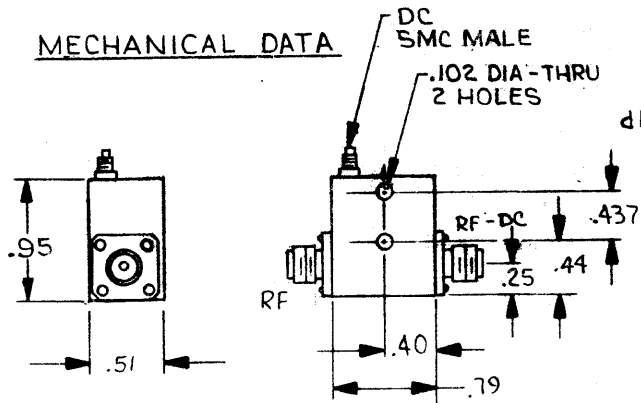


REVISIONS			
REV	DESCRIPTION	DATE	APPROVED
A	ORIGINAL RELEASE	4-19-88	RLS

SPECIFICATIONS

1. MODEL: BT-218
2. FREQUENCY: .01 - 20 GHz
3. VSWR: 1.9 : 1 MAX
4. INSERTION LOSS: 1.0 dB, MAX to 18GHz
1.5 dB, MAX to 20GHz
5. BIAS ISOLATION: 30 dB MIN, 0.3 - 20GHz
20 dB MIN, 0.1 - 0.3GHz
6. D.C. CURRENT: 30 mA MAX
7. D.C. VOLTAGE: 50 VOLTS, MAX
8. D.C. RESISTANCE 70 OHMS, TYPICAL

MECHANICAL DATA



QTY REQD	PSCN NO.	PART OR IDENTIFYING NO.	NOMENCLATURE OR DESCRIPTION	MATERIAL SPECIFICATION
PARTS LIST				
UNLESS OTHERWISE SPECIFIED DIMENSIONS ARE IN INCHES TOLERANCES ARE: FRACTIONS .01 ± .02 ± DECIMALS .01 ± .02 ± ANGLES .001 ± .005		CONTRACT NO.		AMERICAN MICROWAVE CORPORATION FREDERICK, MARYLAND
MATERIAL		APPROVALS	DATE	BIAS TEE, MODEL BT-218 OUTLINE / SPECIFICATIONS
FINISH		DRAWN	4-19-88	
NEXT ASSY	USED ON	CHECKED	ISSUED	SIZE B FSCN NO. 80483
APPLICATION		DO NOT SCALE DRAWING		DWG. NO. 200-1643 REV. A
			SCALE	SHEET 1 OF 1